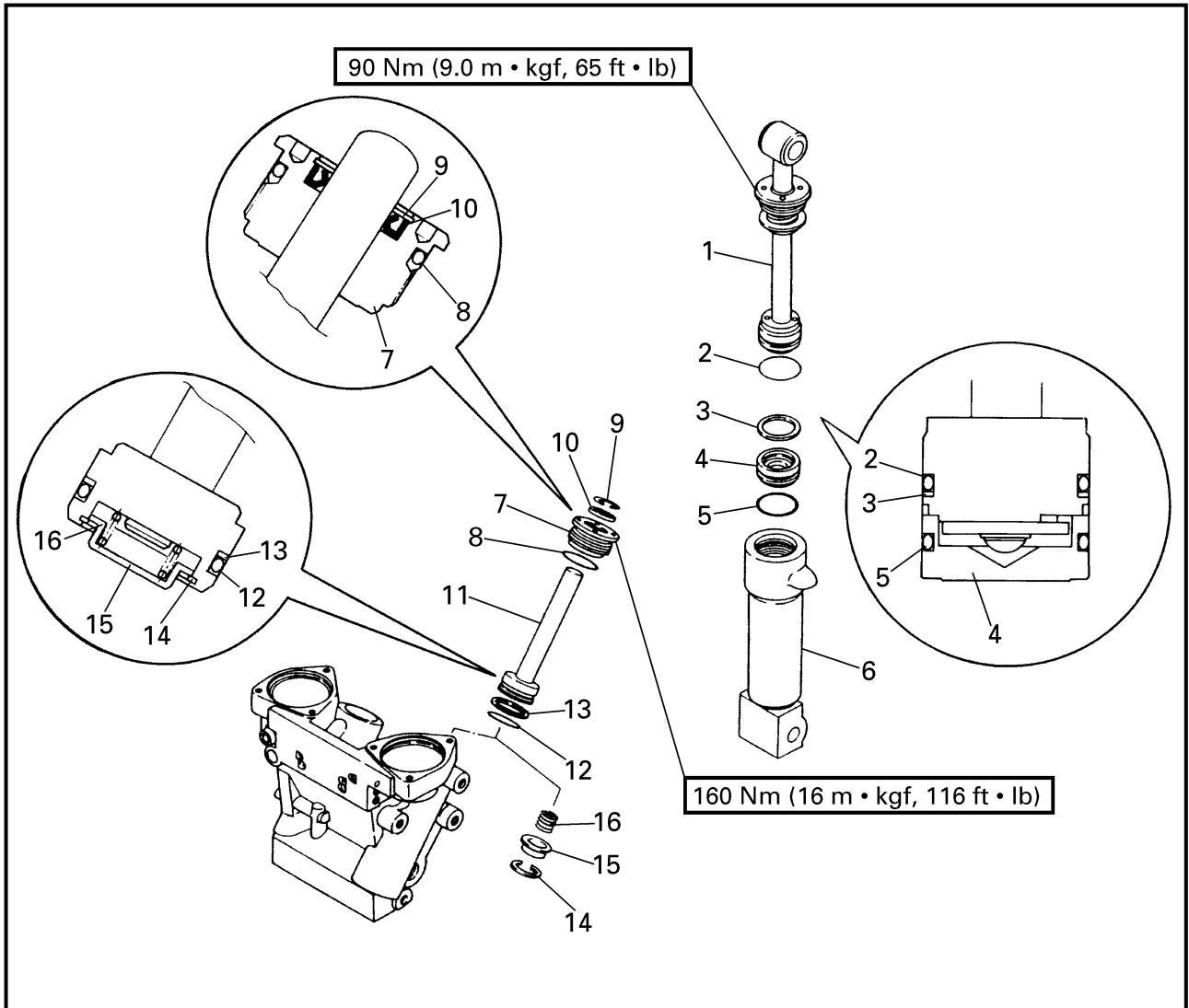


TILT RAM ASSEMBLY AND TRIM RAM ASSEMBLIES
 (225F, L225F, 250B, L250B/S225, L225, S250, L250)
REMOVING/INSTALLING THE TILT RAM ASSEMBLY AND TRIM RAM ASSEMBLIES



| Order | Job/Part | Q'ty | Remarks |
|-------|--------------------------|------|---|
| | Power trim and tilt unit | | Refer to "POWER TRIM AND TILT UNIT" on page 7-19. |
| 1 | Tilt ram assembly | 1 | |
| 2 | O-ring | 1 | 45.7 × 38.7 mm |
| 3 | Seal ring | 1 | |
| 4 | Free piston | 1 | |
| 5 | O-ring | 1 | 45.7 × 38.7 mm |
| 6 | Tilt cylinder | 1 | |
| 7 | Trim ram end screw | 2 | |
| 8 | O-ring | 2 | 45.7 × 38.7 mm |

Continued on next page.